

BOAL

GROUP



WHEN LESS



IS MORE



**SUSTAINABLE
PRESERVING
RESOURCES**

HOW TO MEET THE NEEDS OF A GROWING POPULATION

The world today faces a critical challenge: the demand for food is rapidly outpacing our ability to meet it. In the next 40 years, the demand for food is projected to exceed what has been consumed in the last 8,000 years, and in the next 20 years alone, there will be an unprecedented 50% increase in global food demand.

“It is our purpose to partner with builders and growers globally, empowering them with innovative solutions to help feed & power a growing population. We are committed to contribute to a sustainable future for all.”

As a company, we are committed to finding innovative solutions to address this crisis and partnering with stakeholders across the globe to create a brighter future for everyone.

BOAL
GROUP

ALUMINUM EXTRUSION

The BOAL Group has a unique position in the value chain with its in-house aluminum extrusion facilities in the Netherlands and the United Kingdom. Aluminum is 100% recyclable and a proven key differentiator, particularly in the current base material shortage environment.

BOAL Extrusion specializes in co-designing, extruding and surface finishing aluminum profiles for high-tech greenhouses, but also, for example, for the solar and construction industry. BOAL Extrusion is a trusted partner for customers across the world, with over five decades of expertise. Detailed knowledge of the industry value chain provides customers with supply stability and flexibility in planning.

Using 100% renewable electricity in all our plants in combination with the reduction of our overall energy consumption are vital to the organization's and its customers' ESG ambitions. Post- and pre-consumer scrap material is recycled and reused, minimizing CO2 emissions.

- From co-design to post-processing
- Low carbon aluminum profiles
- Infinite recyclability
- Flexible and reliable delivery



BOAL
EXTRUSION



SUSTAINABLE
RELIABLE
TRUSTED





SUSTAINABLE FUTURE PROOF

GREENHOUSE SYSTEMS

BOAL Systems provides a comprehensive range of aluminum roof and sidewall systems for integration of high-tech glass, poly, foil, solar and sandwich panels. Since its establishment over 50 years ago, BOAL Systems has completed over 8,000 hectares of new greenhouses worldwide, constructed by various local and global greenhouse builders.

Its customized modular systems, which can include fully integrated solutions such as smart ventilation windows, insect netting, screening systems, solar panels and/or insulation panels, meet specific project requirements when it comes to size, complexity or regional challenges.

At the forefront of high-tech controlled environment agriculture (CEA) with a strong focus on partnership, engineering and innovation, BOAL Systems offers advanced greenhouse roofing solutions characterized by maximum light transmittance, enabling growers to achieve optimal yields with minimum resources.

- Over 50 years of experience in greenhouse construction
- High-tech greenhouse systems with superior light transmittance
- For easy integration of glass, poly, foil, solar panels, and insulation panels
- Tailored for any project, addressing climatic or geographical challenges
- Focused on collaboration and technical superiority to deliver durable, low-maintenance solutions



BOAL
SYSTEMS

INSECT NETTING

Holland Netting is a pioneer and leading provider of insect netting or Integrated Pest Management (IPM) systems for covered cultivation worldwide. Insect netting plays a crucial role in sustainable crop protection.

It has proven to be an effective measure to keep harmful insects out, or to retain useful insects inside of the greenhouse. Installing netting in roof vents means the chance of an insect infestation is reduced.

Holland Netting enables growers worldwide to reduce or stop the use of pesticides, resulting in a cleaner crop, increased biodiversity and safe food grown locally.

Insect netting by Holland Netting seamlessly fits in with BOAL Systems' range of aluminum roof and sidewall systems for high-tech glass or foil greenhouse constructions.

- Cleaner & healthier crop
- Long lifespan due to built-in UV stabiliser and high quality materials
- Consistent mesh opening
- Small package, perfect seal, minimal light reduction
- Easy and safe to install, suitable for all types of greenhouses
- Easy to clean, requires only water



HollandNetting
international



SUSTAINABLE CROP PROTECTION



SUSTAINABLE ENERGY SAVING

CLIMATE SCREENS

Sun protection, energy saving, assimilation and darkening. Climate screen systems by Holland Screens are essential for the sustainable production of healthy crops.

Holland Screens is a leading international project partner for turnkey greenhouse screen systems. Holland Screens' systems - single, double, or triple layers, depending on the specific crop or local requirements - enable growers to optimize the greenhouse climate and be energy efficient under all circumstances. Its advanced screen systems offer flexibility in terms of deployment and are easy to use.

Screens by Holland Screens seamlessly fit in with BOAL Systems' range of aluminum roof and sidewall systems for high-tech glass or foil greenhouse constructions.

- In-house manufacturing
- Experienced engineering team
- Highly qualified service & assembly team
- Own fleet of machinery and equipment
- Full service, global knowledge of required documents
- Private label cloths and renowned brands



HollandScreens
international



INSULATION SOLUTIONS

High quality insulation systems form a vital part of high-tech greenhouses' energy saving strategy.

Adding insulation to sidewall and end wall constructions, which do not require sunlight, will result in significant energy savings. Production and service areas constructed with insulation panels will create safe workplaces and will keep the quality stable and secure, thereby limiting food wastage.

WNL Horti Insulation stands as the leading provider of insulation systems for greenhouse builders worldwide. Offering advanced solutions, including panel joints and integrated systems. These innovations are developed in collaboration with BOAL Systems, featuring products like BOAL S-House.

- Sustainable roofing, sidewall and indoor solutions
- Patented Easyjoint insulation panels, which guarantee a perfect, simple, watertight and sealant free coupling
- Advanced panel joints and integrated systems
- Recyclable high quality materials
- Quick & easy installation
- The service department of WNL can handle all details of your order, from engineering to logistics, ensuring a seamless process.



SUSTAINABLE SMART INSULATION





**SUSTAINABLE
SKILLED
TRUSTED**

VENTILATION - SCREENS - PARTS

At Alumat Zeeman, we believe that sustainable greenhouse construction is key to creating a greener future. That's why we offer a wide range of high-quality greenhouse related systems and supplies, designed to minimize environmental impact and ensure long-term sustainability.

Our products include energy-efficient screening and intelligent ventilation systems for greenhouses, as well as sustainable (custom) building supplies, enabling greenhouse builders to build sustainably and reduce their carbon footprint.

Partnering with Alumat Zeeman for your next greenhouse project means that we work together towards a more sustainable future!

- Since 1928
- In-house R&D and engineering for customized greenhouse screen, drive and ventilation systems
- Specialized in industrial processing of wire, metal sheets and tubes for greenhouse solutions
- Online shop with 3000+ high quality parts for greenhouses



**ALUMAT
ZEEMAN**

RELEASING SOLAR ENERGY POTENTIAL, EVERYWHERE.

Energy Ports is dedicated to revolutionizing the accessibility of renewable energy for everyone. Through its solar ports, Energy Ports transforms local parking lots and other covered areas into local energy sources. Its innovative approach allows to seamlessly integrate renewable energy generation, without compromising the original purpose and while respecting the local ecosystem of nature, animals, people, and economic values.

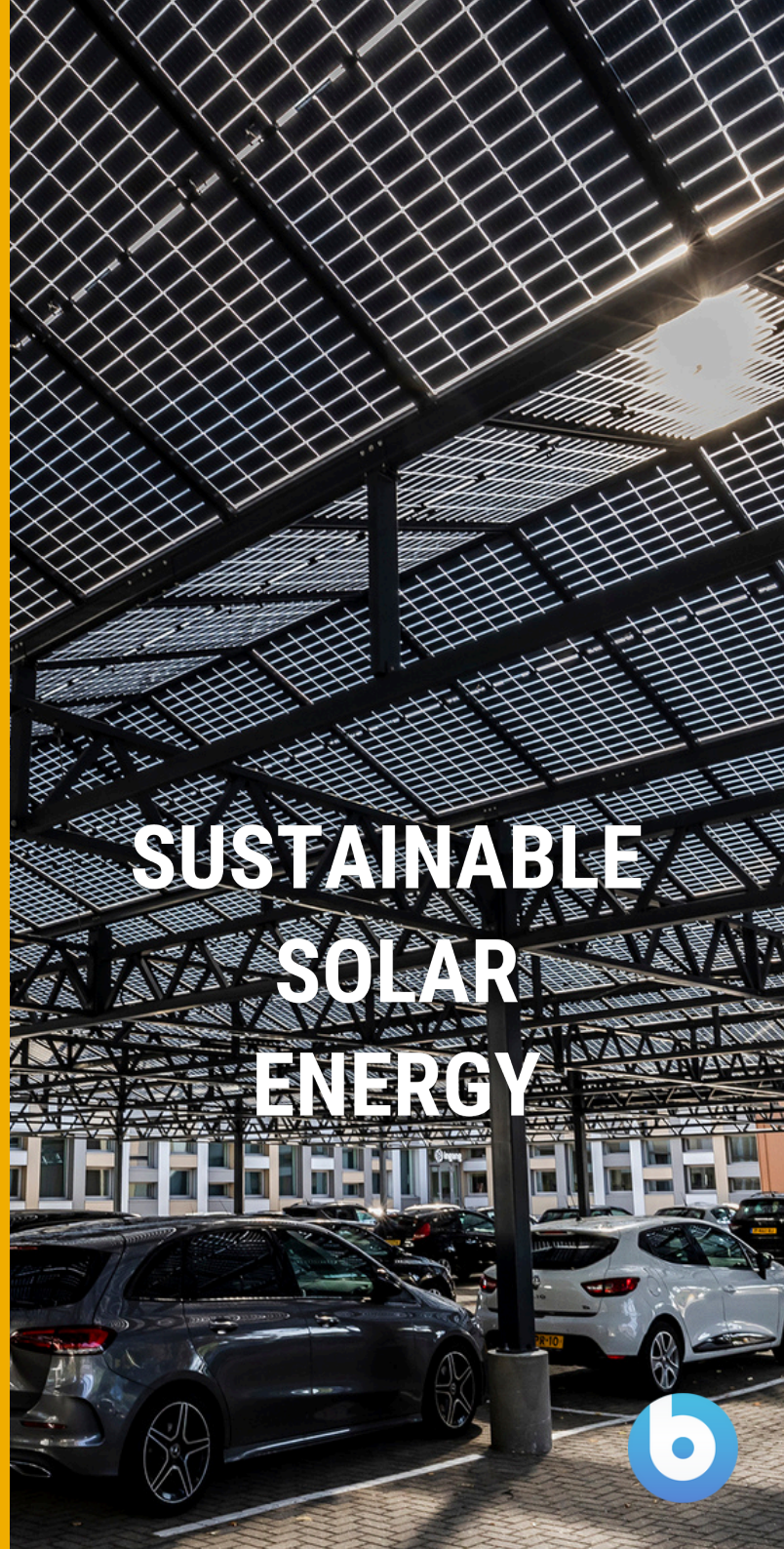
BUILD YOUR LOCAL ENERGY SOURCE

Energy Ports believes that renewable energy should be accessible and harmoniously integrated into existing spaces. By promoting multiple land use, harnessing solar power, and implementing robust water management systems, it contributes to a greener future while preserving precious resources. Together, let's revolutionize renewable energy accessibility for a brighter and more sustainable world!

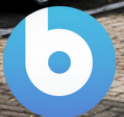
- Stack values: Parking, energy, shelter, sustainability
- Robust water management system
- Quick & Easy to install
- Compliant with all climate zones
- Superb safety & watertightness



 ENERGY PORTS



SUSTAINABLE SOLAR ENERGY





SUSTAINABLE LOCAL SUPPORT

GREENHOUSE SUPPLIES & SERVICES IN CHINA

BGF, a joint venture between BOAL Group and Flexibell in China, is the supplier of choice supporting the growing demand for local greenhouse supplies & services in China.

With the local production and presence of BGF in China, high-tech greenhouse builders are facilitated to expand their horizon in China, while eliminating the traditional hurdles of import duties, language barriers and logistic costs. BGF facilitates greenhouse builders to source supplies like greenhouse roof systems, insect netting and climate screen solutions for the Chinese market locally, while being ensured of the A-grade Dutch quality traditionally delivered by the BOAL Group.

BGF is committed to deliver high quality products and services, and contribute to the success of its clients locally. BGF will support the further development of China's horticulture in the years to come.

- Broad range of high quality horticulture products locally produced in China
- Dutch quality, building standards and norms
- Tailormade Dutch designed solutions for greenhouse roofing projects
- Highly qualified local service team
- Local supervising services

SUSTAINABILITY

WHY

Climate change is one of the most pressing challenges facing our world today. Its impacts are far-reaching, affecting both our environment and society, and exacerbating global sociodemographic imbalances.

HOW

To address this challenge, we have made a deliberate choice to integrate a long-term ESG sustainability strategy at the core of our business. Our aim is to optimize our environmental footprint and ensure BOAL is well-equipped for the future.

TOGETHER

We are committed to collaborating with our suppliers and customers on this mission. By working together, we can make a meaningful impact and drive positive change for a sustainable future.



SUSTAINABLE HEALTHY SAFE

SUSTAINABILITY AT BOAL GROUP



BOAL
GROUP



ABOUT BOAL GROUP

MAJORITY SHAREHOLDER
Equistone Partners Europe
(EPE)


TURNOVER
EUR 250 million

EXPORT SHARE
90% (50+ COUNTRIES)

NEW GREENHOUSES
BUILT WITH BOAL GROUP
IN THE LAST 10 YEARS

 **3,000 hectares**
in total

 **1,000,000,000 KG**
tomatoes annually

 **200,000,000,000 L**
water saved
annually

 **16,400,000 panel**
installations
facilitated in total



ALL ROUND SOLUTION PROVIDER

ROOF & SIDEWALL SYSTEMS

Strong aluminium structure for maximum light or solar power.

CLIMATE SCREENS

Energy efficient screens. Protects crop from burning and discoloration.

VENTILATION

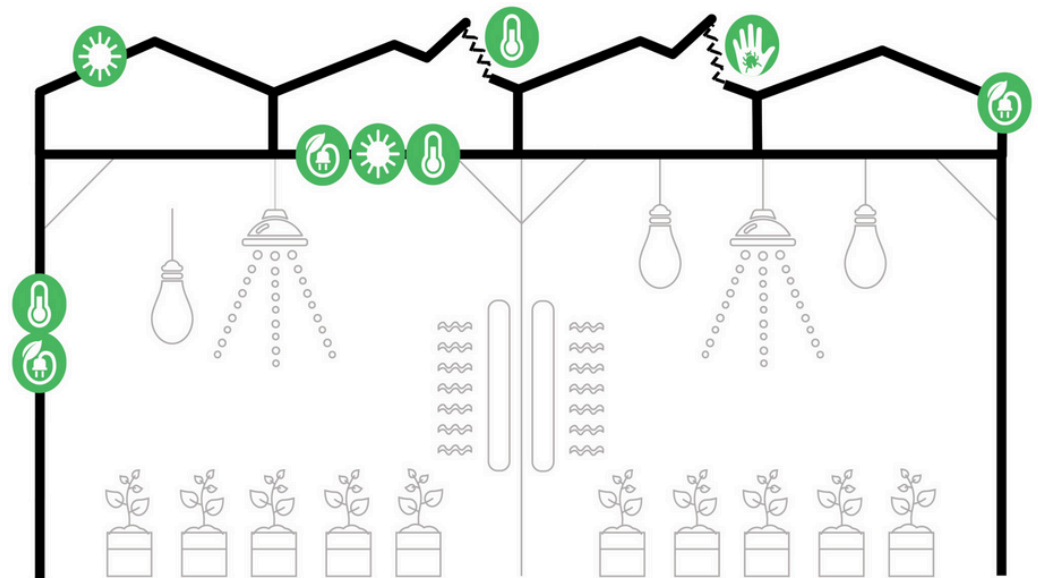
Keep heat inside or outside. Maintain the desired relative humidity level.

INSECT NETTING

Sustainable Integrated Pest Management. Reduce the use of pesticides.

INSULATION SYSTEMS

Cool and safe storage and service areas using sandwich panels for roofs and sidewalls.



WWW.BOALGROUP.COM