

# Flare.

Top Lighting Solution for Horticulture



# The Top Lighting Solution for Commercial Growers.

Flare. can work as a replacement for, or in addition to, HPS / SON-T grow lights.  
Flare. is ideal for both supplemental greenhouse lighting and indoor sole-source lighting.

## Versatile ●

Due to a wide range of spectrums and mounting accessories, Flare. can be used in a **broad variety of applications**.

## Flexible ●

Flare. can be equipped with **integrated or remote drivers**, allowing the user to place the power supplies in the most convenient location for easy access and maintenance.

## Reliable ●

Flare. is built for heavy duty usage. The circuit design and the thermal management system **Guarantees stable spectrum output** over its lifetime.

## Performing ●

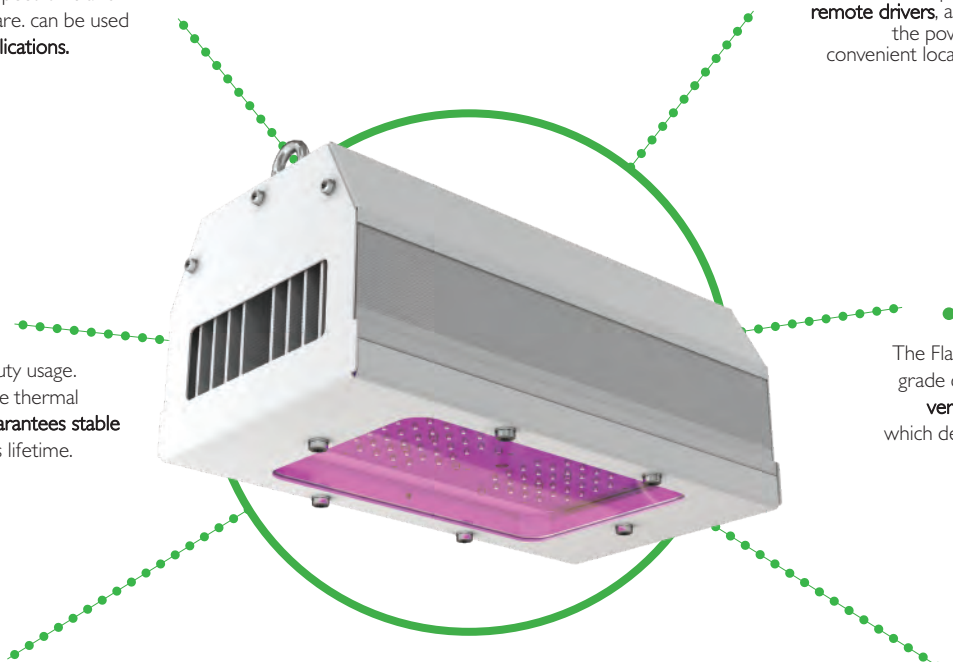
The Flare. PCB is built with high grade copper material, keeping **very low LED temperature**, which delivers high performance and a long lifetime.

## Practical ●

The integrated Midstream Active Cooling System (MACS) allows for **extremely compact design**, significantly reducing the shadowing over the plants during daylight hours.

## Durable ●

Flare. is constructed from powder coated **stainless steel** to resist wet and corrosive environments. It is entirely waterproof.



# GreenHouse

Typical Layout

Edible Crops



## Tomato

$\mu\text{mol/s.m}^2$ :	190
Uniformity:	0.7
Mounting Height:	3 m
<b>Line Layout</b>	
Distance Between Luminaires:	3 m
Connected Load:	80 W/m <sup>2</sup>



## Lettuce

$\mu\text{mol/s.m}^2$ :	130
Uniformity:	0.8
Mounting Height:	3 m
<b>Grid Layout</b>	
Distance Between Luminaires:	3.5 m
Connected Load:	55 W/m <sup>2</sup>



## Cucumbers

$\mu\text{mol/s.m}^2$ :	175
Uniformity:	0.8
Mounting Height:	3 m
<b>Grid Layout</b>	
Distance Between Luminaires:	3 m
Connected Load:	75 W/m <sup>2</sup>

# GreenHouse

Typical Layout

Ornamentals



## Orchid

μmol/s.m <sup>2</sup> :	100
Uniformity:	0.8
Mounting Height:	3 m
<b>Line Layout</b>	
Distance Between Luminaires:	3.9m
Connected Load:	42 W/m <sup>2</sup>



## Roses

μmol/s.m <sup>2</sup> :	180
Uniformity:	0.8
Mounting Height:	3 m
<b>Grid Layout</b>	
Distance Between Luminaires:	2.9 m
Connected Load:	78 W/m <sup>2</sup>



## Tulip

μmol/s.m <sup>2</sup> :	45
Uniformity:	0.65
Mounting Height:	3 m
<b>Grid Layout</b>	
Distance Between Luminaires:	6.9 m
Connected Load:	16 W/m <sup>2</sup>

# Indoor

Typical Layout

Cannabis



## Medicinal Cannabis - Vegetative Stage

μmol/s.m <sup>2</sup> :	350
Uniformity:	0.8
Mounting Height:	2.8 m
<b>Field Configuration</b>	
Distance Between Luminaires:	1.7 m
Connected Load:	78.5 W/m <sup>2</sup>
Luminaire Dimming:	60%



## Medicinal Cannabis - Flowering Stage

μmol/s.m <sup>2</sup> :	830
Uniformity:	0.8
Mounting Height:	2.8 m
<b>Field Configuration</b>	
Distance Between Luminaires:	1.7 m
Connected Load:	188.5 W/m <sup>2</sup>
Luminaire Dimming:	0%



Due to the smart dimming controls available for Flare products (WiFi or LAN) medicinal cannabis growers can optimize their energy use during the different stages of growth.



Using a simple App or Manual 1-10v Dimmers the light level can be adjusted to the required 1 - 10V level, reducing heat in your grow room and maximizing profits by reducing energy costs.



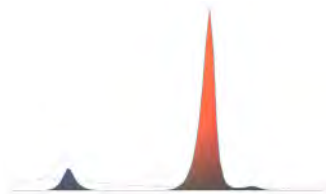
# Standard Spectra

Flare. offers a wide variety of spectra to fulfil most typical requirements.

Need to refine your perfect blend? Contact [grow@midstreamlighting.com](mailto:grow@midstreamlighting.com) and we can deliver your bespoke light recipe.

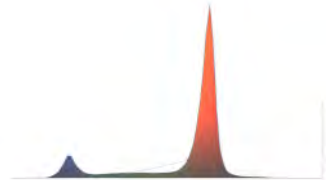
Flare. offers a stable spectrum output, our Warranty covers spectrum deviations for 5 years.

## Greenhouse



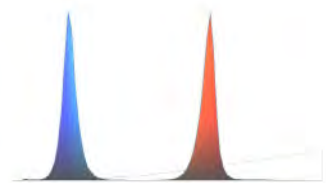
**SFLO**

The high red and far red wavelengths of this spectrum stimulate flowering and reproduction in a wide variety of plants. It is ideal for floriculture and ornamentals.



**SVGGR**

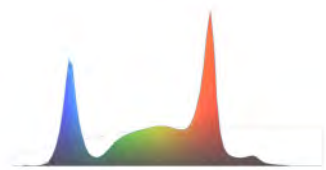
This spectrum is designed to promote leaf building and biomass production. It is ideal for leafy greens and crops such as tomatoes, cucumbers and bell peppers.



**SVGGB**

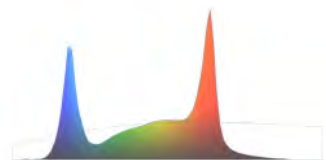
The additional peak on the blue spectrum (400-500nm) counteracts the plant stretch induced by the far red radiation of the sun, allowing for strong growth & development in the vegetative stage, delivering compact crops. Additionally, this spectrum is perfect for Algae production.

## Indoor



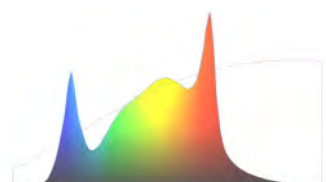
**IFLO**

This spectrum is known as full cycle, with blue and red peaks and a strong far red component, ideal for full cycle cannabis cultivation and floriculture.



**IVGB**

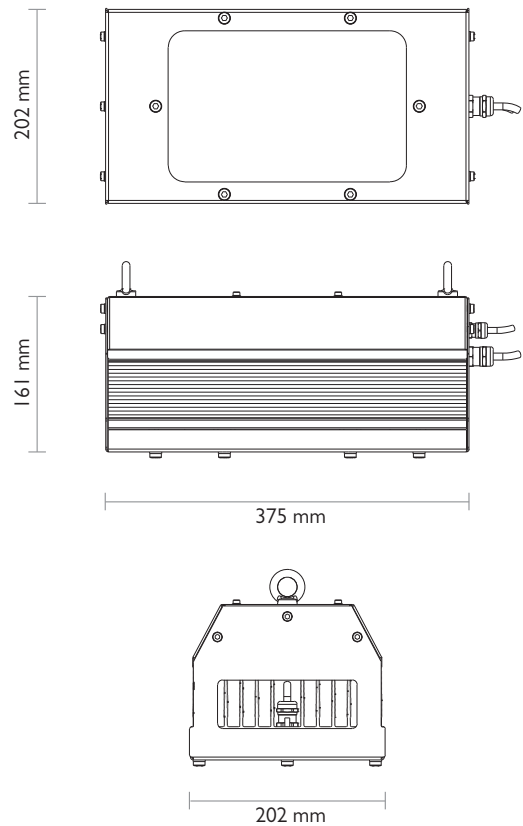
This spectrum is designed to promote leaf building and biomass production. The additional white spectrum allows for a complete indoor cycle for leafy greens and crops such as tomatoes, cucumbers and bell peppers.



**IVGF**

This spectrum is designed for rapid growth and complete plant development, from propagation to final product. The high colour fidelity also allows for easy crop inspection for effective quality control during growth.

## Luminaire Technical Data



### Technical Data

#### Performance

PPF	1440 - 1980 $\mu\text{mol/s}$
Efficacy	2.3 - 3.2 $\mu\text{mol/J}$
Power Absorption	625 W

#### Luminaire Body

Structure	Corrosion proof Stainless Steel
Metal Coating	Powder Painted
Heatsinks	Extruded Aluminium
Bracket	Hanging / Busway / Adjustable ropes
Weight	8 kg
Dimensions (LxWxH mm)	375L x 202W x 161H mm

#### Electronics - Replaceable remote power supply unit

Voltage Input	249-528 VAC 50-60 Hz
Power Factor	0.95
Mean Time to Failure	200,000 hrs
Surge Protection	Line to Earth 10kV; Line to Line 6kV
Insulation Class	IEC Class I
IP Rating	IP 67
Short Circuit Protection	Auto-recovery
Over Heat Protection	Drops output current
Rel. Humidity Range	0 - 98%
Operating Temp	-40°C up to +75°C

### Ordering codes

Product Family	Power	Spectrum	Control	Voltage	Connector	Driver	Mounting Hardware
F (Flare)	62	SFLO(Supplemental Flowering)	00 (No Control)	3F (249 - 528 Vac)	WG (Weiland Green)	I (Integrated Driver)	S (Suspension Rings)
		SVGR(Supplemental High Red)	WI (Wifi Node)	1F (90 - 305 Vac)	WB (Weiland Black)	R (Remote Driver)	B (Busway Clamp)
		SVGB (Supplemental High Blue)			NC (No Connector)		R (Adjustable Ropes)
		IFLO (Indoor Flowering)					
		IVGR (Indoor High Red)					
		IVGB (Indoor High Blue)					

Example: F - 62 - SFLO - 00 - 3F - WG - I - R

CE LED  IP67



Midstream Lighting Ltd,  
Wessex House, 1 Chesham Street,  
London SW1X 8ND, UK  
Tel +44 207 584 8310  
[grow@midstreamlighting.com](mailto:grow@midstreamlighting.com)  
[www.midstreamlighting.com](http://www.midstreamlighting.com)

 **MIDSTREAM**  
GROWTH ENGINEERED.