



HortiMaX Synopta®

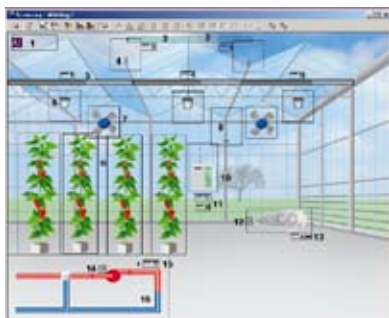
- Fully customisable
- Very user-friendly
- Maximum reliability

The leading all-in-one computer software



For years now, Synopta has been the leading management and information software for HortiMaX process computers. This is no wonder, since the software makes it a breeze to navigate through the settings and readouts of our advanced computer systems. Synopta includes a wide range of options for presenting and analysing data. You can create your own summaries and settings windows, or a combination of both, and fully customise anything from the colours, fonts and backgrounds to your favourites list and taskbars.

A unique feature of Synopta is that every summary, settings window, setpoint graph, historical graph or statistical table is shown in a separate window. You can display any number of these windows on the screen simultaneously. After opening a number of windows, you can save them as a group and retrieve them later with one click of the mouse. This lets you create overviews of heating, energy and irrigation control, for instance. Synopta is not only reliable and flexible, but also offers maximum ease of use.



MultiMonitor

Modern horticultural businesses have to deal with an increasing flow of process information. The amount of information necessary to take the right decisions is often so extensive that it simply won't fit on one screen. Synopta solves

this problem with the MultiMonitor, which transforms two or three screens into one large one. This enables you to double or triple the amount of information that can normally be displayed at the same time. And more information gives you more options.

Scheduler

Synopta was recently updated with new features, such as the Scheduler. This lets you automatically export data from Synopta for use in other programs (e.g. Excel).

Events

Another new feature that has been added is the Event Log, which keeps track of which settings were changed by whom and when. The Event Log also saves the notifications and alarm messages generated by your process computer.

Valves

The Link screen makes it easy to assign a large number of valves to valve groups (or irrigation programs) by simply dragging valves to the desired groups. You can do this valve by valve, or select and drag a number of valves together.

- Display multiple windows on screen simultaneously
- Retrieve important summaries with one mouse click

