

Sense. Discover. Improve.

Mass Start

NEW

€400,-
/pc.



To start in balance should be easy.

Track water of your seed trays.
Robust and accurate.
20 Kg in 0.25 g steps

Soil Pro

€600,-
/pc.



Light, air and soil in one.

Light PAR, Air Temperature, Air Humidity,
Soil Water, Soil Electrical Conductivity, Soil
Temperature in a single wireless device with a
battery that last more than 1 year. 1 Km range.

Thermal Camera+

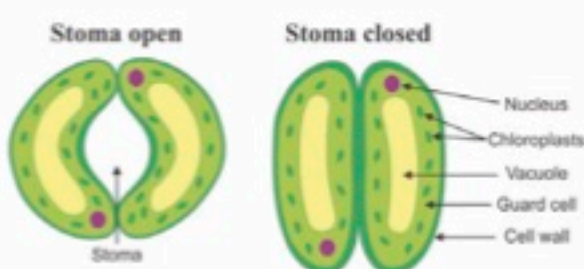
NEW

**Wireless Thermal Camera
with online platform.**

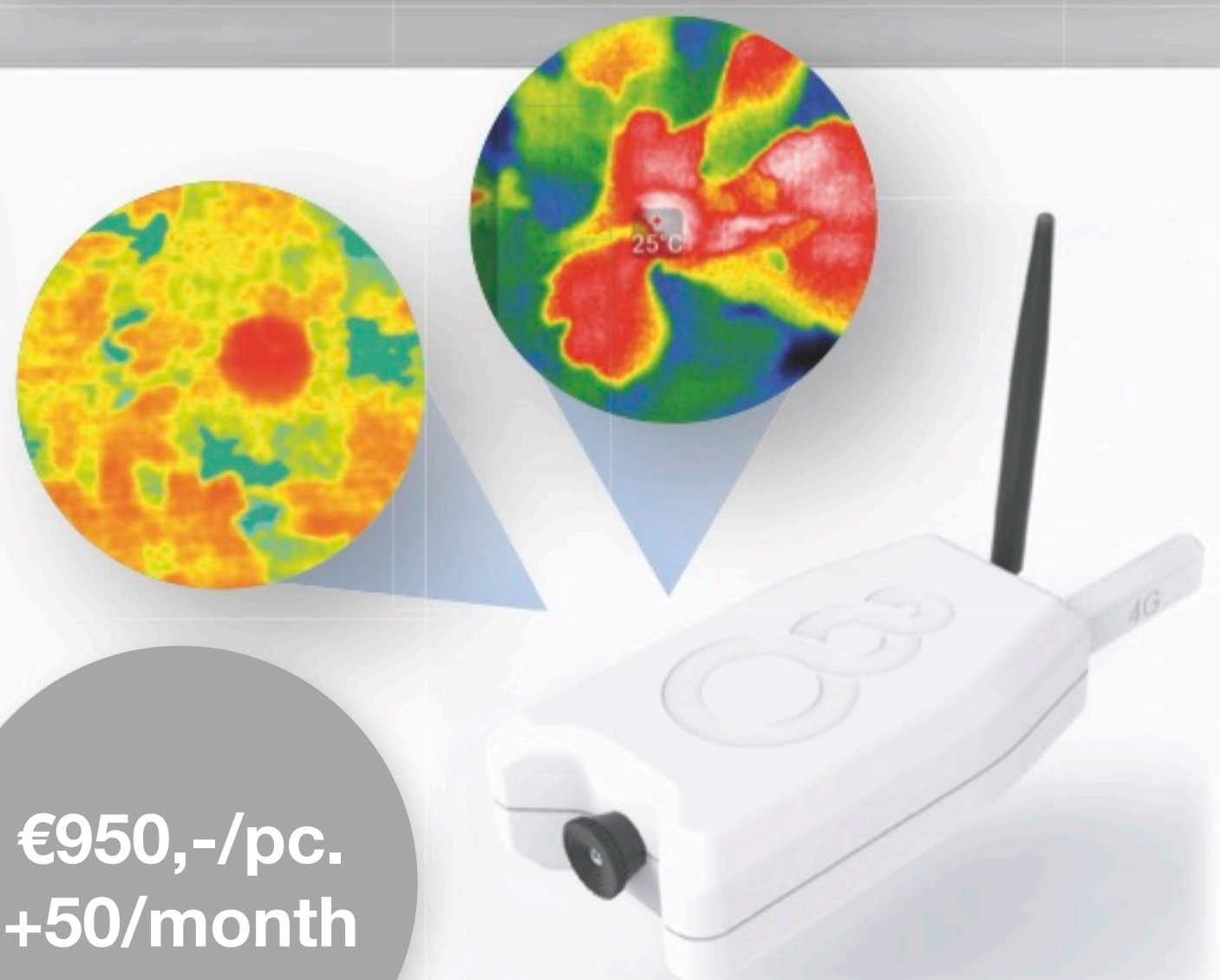
Check your leaf temperature and ensure optimum
photosynthesis and water uptake status.

Finally we can see how plants are transpiring.

Stomata closes under climate stress reducing
CO₂ uptake and increasing
plant temperature. Find the
right climate, open your
stomata and let CO₂ in.



€950,-/pc.
+50/month



Made in The Netherlands



Plant Physiology Essentials



Free Online Software



Sense. Discover. Improve.

Mass Start



Wireless Scale

- Measure up to 20 Kg
- Accuracy: ± 20 g
- Battery life: +6 months on rechargeable 2xAA batteries
- Sampling time: 15 minutes
- Radio range: +300 meter from central in greenhouse environment
- More than 100 scales under a single Sigrow central station
- Free online access via web browser app
- Custom made options available
- Ideal for propagation and germination of seed trays

Easy to use:
place dry tray on top,
click zero button,
place your wet dry
tray on top. That's it!

Soil Pro

Sigrow essential
air sensing, as well
as vital substrate
information



Measures:

- PAR
- Air temperature
- Air humidity
- Substrate water content
- Substrate EC
- Substrate temperature

Light, air and soil monitoring - all in one!

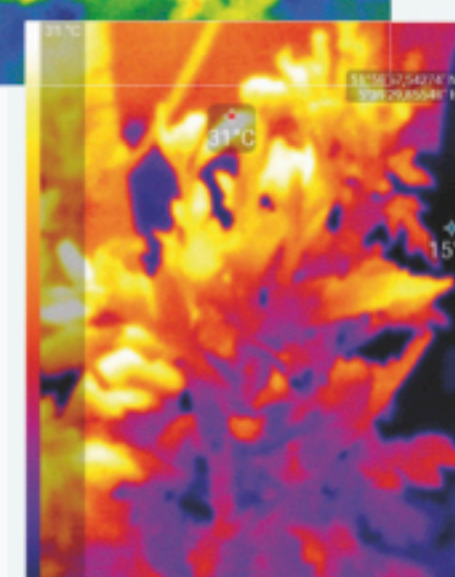
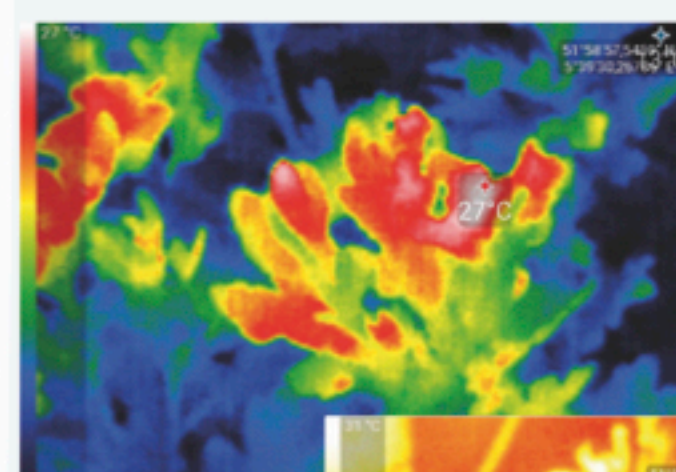
- Free online access to data
- Sampling time of sensors: 5 minutes.
- Unlimited sensor connections to a central node
- Measure sensor covered range: up to 1km range from sensor to central node
- Additional data analysis services to help you make the best decisions at the right time.

Thermal Camera+

Wireless Thermal Camera with online platform

**Check your leaf temperature and
ensure optimum photosynthesis and
water uptake status.**

- Close your climate screen at the right time.
- Resolution 206x156 pixels
- Online access.
- Easy installation in your greenhouse



info@sigrow.com

www.sigrow.com



Sense. Discover. Improve.

Air

Sigrow Air is our most essential sensor. Everything in horticulture starts with light.

€200,-
/pc.



Measures:

- PAR
- Air Temperature
- Air Humidity

A must have sensor for every greenhouse

Air Pro

Find your photosynthesis bottleneck and make it optimal

€600,-
/pc.



Measures:

- PAR
- Air Temperature
- Air Humidity
- CO₂ level (0 -2000 ppm)
- ±50 ppm accuracy
- Calibration for CO₂ with the click of a button

Measure the variable that really make a difference

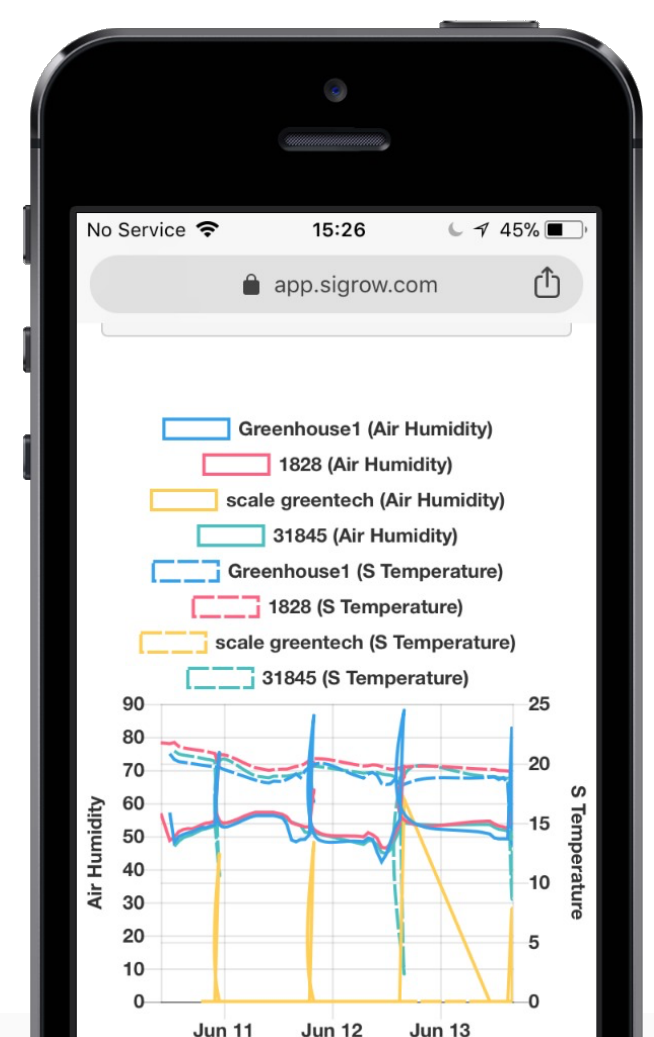
We've also included a ventilation add-on to correct for temperature bias due to irradiation available upon request. Less than 5% error in PAR readings against state of the art Li-Cor PAR sensors

All data combined, available in one place

All our sensors connect to one single central terminal. The terminal is connected to the internet, making it possible to access your data from anywhere, at anytime.

Our webapp and mobile app are free and easy to use.

**Start collecting your climate data now.
To measure is to know. Sense. Discover. Improve.**



info@sigrow.com

www.sigrow.com

