

GE current
a Daintree company

LED HORTICULTURE LIGHTING SYSTEMS



Arize Factor[®] ML900

High power for high-density cultivators

Optimized

Three broad light spectrums optimize growth at every stage, from vegetative to flower.

Scalable

Maximize production in both single- and multi-layer facilities with the Factor's multiple rack mounting options

Powerful

Each ML900 array produces an average 1,050 $\mu\text{mol}/\text{m}^2/\text{s}$ over a 4' x 4' area at 2.8 $\mu\text{mol}/\text{J}$

Assembled in the USA

Trusted manufacturing, a standard five-year warranty and a >50,000 hour lifetime ensure consistent, predictable yields for years to come

www.led.com for the latest in lighting innovations from the inventors of the LED

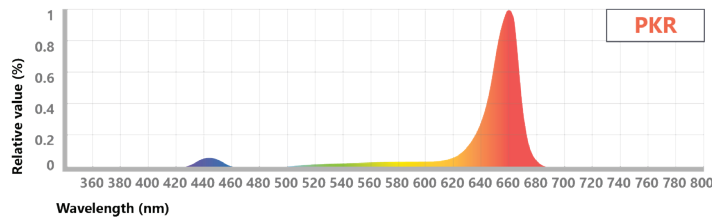


Arize Factor® ML900

Spectrums

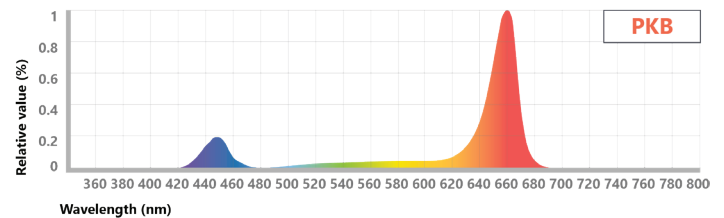
Type R

High red light to optimize plant growth and photosynthesis



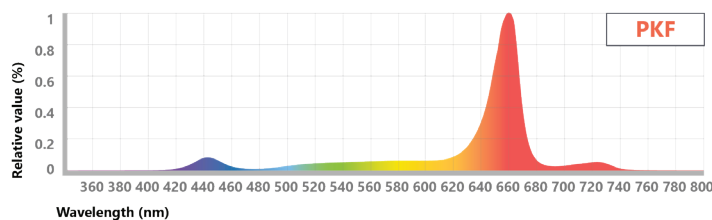
Type B

Light that supports biomass and secondary metabolite production



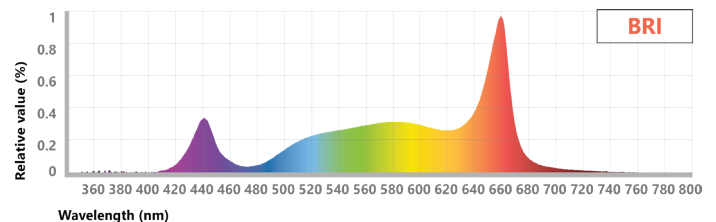
Type F

Encourages an expansion response for more robust growth



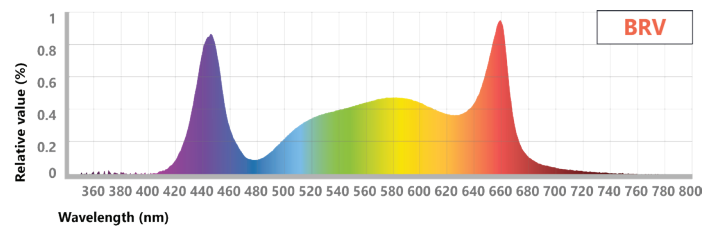
Type BR

Increased blue ratio boosts secondary metabolite production to promote crop quality and phytochemical profile



Spectrum Photon Distribution

Ratio	Blue PF	Green PF	Red PF	Far Red PF
PKR	8%	15%	77%	0%
PKB	16%	15%	69%	0%
PKF	8%	15%	72%	5%
BRI	15%	38%	47%	0%
BRV	25%	38%	37%	0%



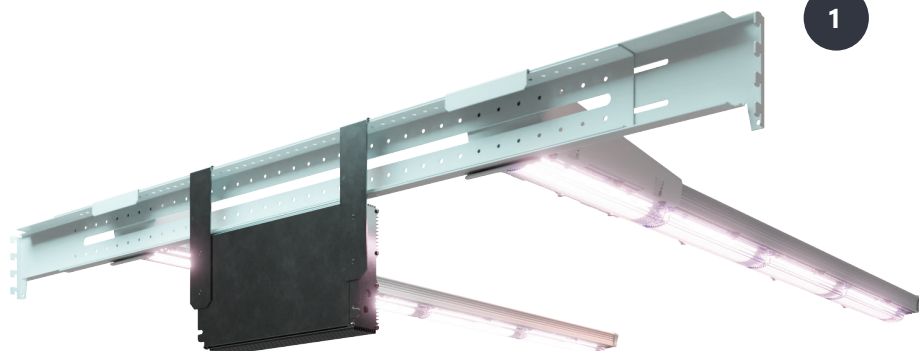
Spectrum Table

Spectrum	Typical Photon Flux ¹ (μmol/s)	Power ² (W)	Efficacy ² (μmol/J)	DC Input Voltage	Light Bar Model Number ³
PKR	1741	639	2.7	143	GEHF-HPKRW1
PKB	1695	626	2.7	141	GEHF-HPKBW1
PKF	1729	626	2.8	141	GEHF-HPKFW1
BRI	1448	638	2.3	143	GEHF-HBRIW1
BRV	1404	632	2.3	142	GEHF-HBRIVW1

¹ Typical PPF +/-10% ² Tested at maximum input voltage of 480VAC ³ See Order Code Table on page 4 for ordering logic

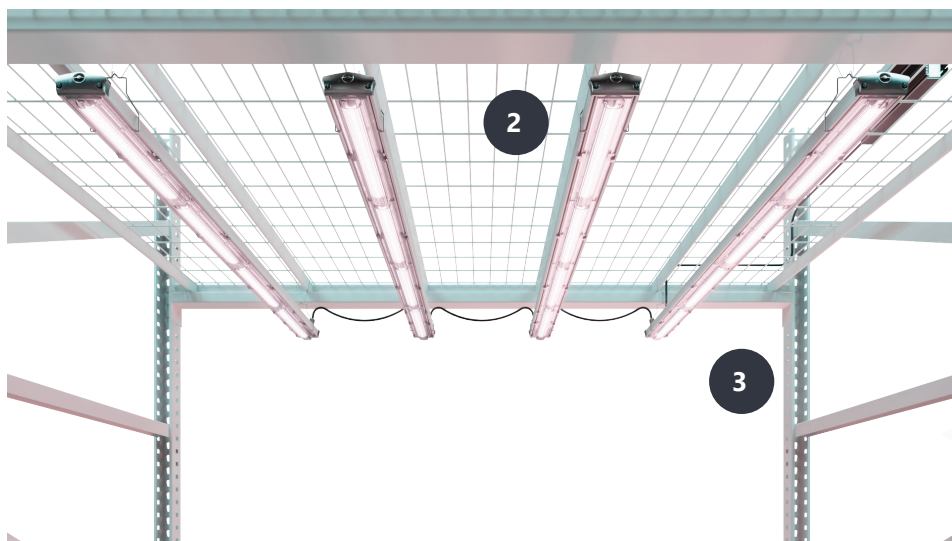


Why Factor?



1 Rolling Rack Mount

Factor adapts to your grow, not the other way around. The system can be installed on the side of a grow cart using the transversal bar, allowing it to fit below ventilation systems.



2 Suspended Mount

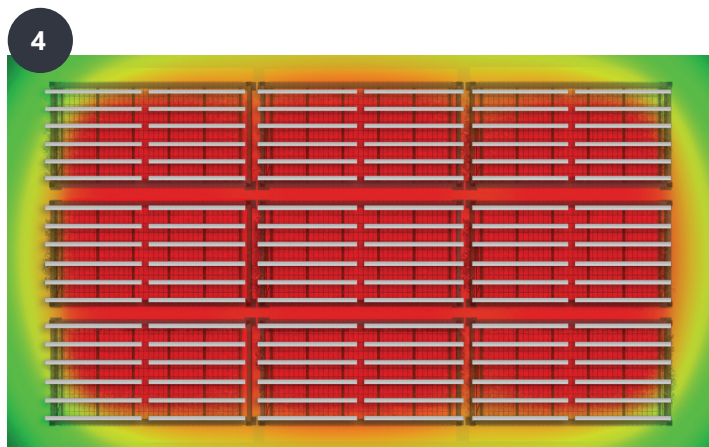
One size fits all. Straightforward hooks allow the light bars to be hung from any rack, and the power supply can be remotely mounted, meaning the Factor can be used in any setup.

3 Reliability

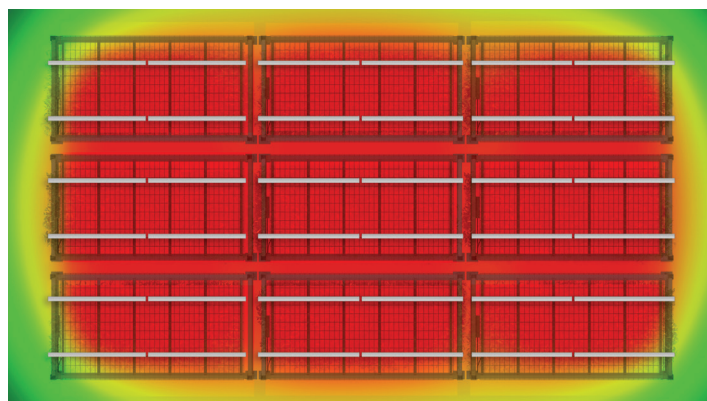
We perform the most extensive, stringent testing in the industry. We test the LED, water and dust ingress protection, sub-system and complete system at our in-house and independent laboratories around the world. Validation of our designs, components, products and processes include high temperature, high humidity and accelerated life testing.

4 Do More With Less

Compared to multi-bar arrays, the Factor maintains or exceeds PPFD levels over a 4' x 4' area using only two bars per array, lowering capital and operating expenses.

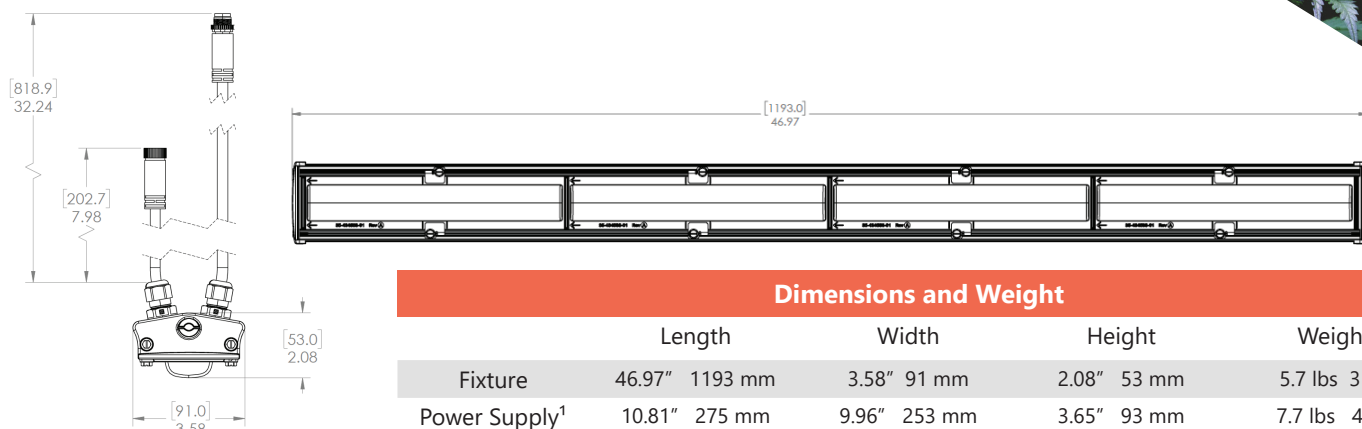


Multi-bar arrays



Arize Factor ML900

Mechanical Outline



Dimensions and Weight

	Length		Width		Height		Weight	
Fixture	46.97"	1193 mm	3.58"	91 mm	2.08"	53 mm	5.7 lbs	3 kg
Power Supply ¹	10.81"	275 mm	9.96"	253 mm	3.65"	93 mm	7.7 lbs	4 kg
Power Supply ²	12.60"	320 mm	5.94"	151 mm	1.81"	46 mm	7.1 lbs	3 kg

¹ Input voltage options 2, 3 and 7 ² Input voltage option 8

Specifications

Dimming Range	0-10V	Power Factor	>0.9
Max Source Current	450uA	Max. Remote Mount Distance	6 ft (1.83 m)
Dim-to-off	Yes	Cooling	Passive
Dim Off Voltage	0.35-0.65V (typ. 0.5V)	Light Distribution	140°
Dim On Voltage	0.55-0.85V (typ. 0.7V)	Operating Environment	0°C to 30°C (32°F to 86°F)
Dimming Output Range	10%-100%	IP Rating	IP65
Absolute Maximum Dimming Voltage	20V	Lifetime	L90: >50,000 hours ³
For input voltage option 3, dimming control input is non-isolated from Class 1 driver output circuit. Use with sink dimmers only		Warranty	Five-year system warranty
		System Certifications	cULus E492907, CE, UKCA

³ Tested at 30°C per TM-21

Order Code Table

GEHF		H2			W		1
Product ID	Model	Mounting	Spectrum	Input Voltage	Distribution	Options	Gen
GEHF	H2 = 2x high output bars, 1x 600W driver	R = Rolling Rack	PKR	2 = 120-277V (UL)	W = Wide Batwing	X = None	1
		S = Suspended	PKB	3 = 277-480V (UL)		5 = NEMA 5-15P ⁴	
			PKF	7 = 220-240V (CE)		6 = NEMA 6-15P ⁴	
			BRI	8 = 380-415V (CE)		7 = NEMA L7-15P ⁵	
		BRV					

⁴ Only available with input voltage option 2
⁵ Only available with input voltage options 2 or 3



© 2021 Current Lighting Solutions, LLC. All rights reserved. GE and the GE monogram are trademarks of the General Electric Company and are used under license. Information provided is subject to change without notice. All values are design or typical values when measured under laboratory conditions. Horticultural lighting. Not suitable for household illumination.

Electrical products must not be thrown out with domestic waste. They must be taken to a communal collecting point for environmentally friendly disposal in accordance with local regulations. Contact your local authorities or stockist for advice on recycling. The packaging material is recyclable. Dispose of the packaging in an environmentally friendly manner and make it available for the recyclable material collection-service.

GE current
a Daintree company

www.LED.com | HORT146EU (Rev. 04/12/2022)