

Manufacturing company

IMA Greenhouses is a company specialized in manufacturing, distribution and installation of greenhouses around the world.

IMA technical department constantly examines and evaluates new technologies for improvement of the structures.

Our greenhouses are well-developed and equipped with cutting-edge technological innovations that allow them to meet the demands of the most advanced farms by giving the farmer maximum reliability in the aeration factors, high quality service, high speed installation, etc.

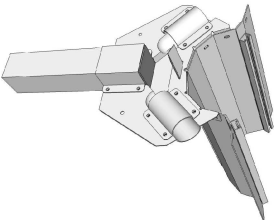
The final product which has a number of features that make it unique in the market.



Technical specification

Gutter

Key piece of the greenhouse which fasten pillars and arches. The gutters are designed to evacuate as much water as possible and to reinforce the structure with the maximum resistance. Possibility of the anti-condensation gutter, designed by IMA, to collect the condensation water from the plastic roof.



Fastening system

Consists in three parts: a steelprofile "c" or "m" in which two long life (with anti-UVA) tongue and groove PVC profiles. The film can be retensioned without causing tears or holes. The fixing is completely independent of the structure, thereby allowing greater water and air tightness. In addition isolates the plastic of steel and its temperature



Quick assembly greenhouse

All elements of IMA greenhouses are designed for use in a modular way, so there are no technical barriers for the future enlargement of the structures.

The labor employed in the assembly is one of the factors that most influence the final cost of a greenhouse, that is the reason why we are so concern for designing assembly systems (profiles, flanges, etc.) that, while ensuring robustness of the structure, allow a very fast assembling, eliminating the maximum number of screws, and the use of special tools



Covering

- Polyethylene film (single/double)

- Polycarbonate (single/double)

- Prelacquered sheet

There are many factors that contribute to benefit a plantation protected by plastic cover. Among them are the following:

- **Thermicity**, is the capability of the film to retain the heat that is dissipated in the evening. Slows heat loss at night thereby preventing the temperature drops excessively inside the greenhouse, avoiding that the temperature decrease impinges on crops
- **Dissemination of Light**, is the property that have covers to change the direction of the solar rays spreading it equally throughout the area to benefit the greenhouse as a whole and also prevent them from reaching directly to the plant. This factor allows the harmonious development of the crop and helps to obtain more homogeneous and healthy fruit.
- **Ultraviolet filter**, it blocks ultraviolet radiation (radiation harmful to crops), but allows the passage of solar radiation beneficial to the crop.

